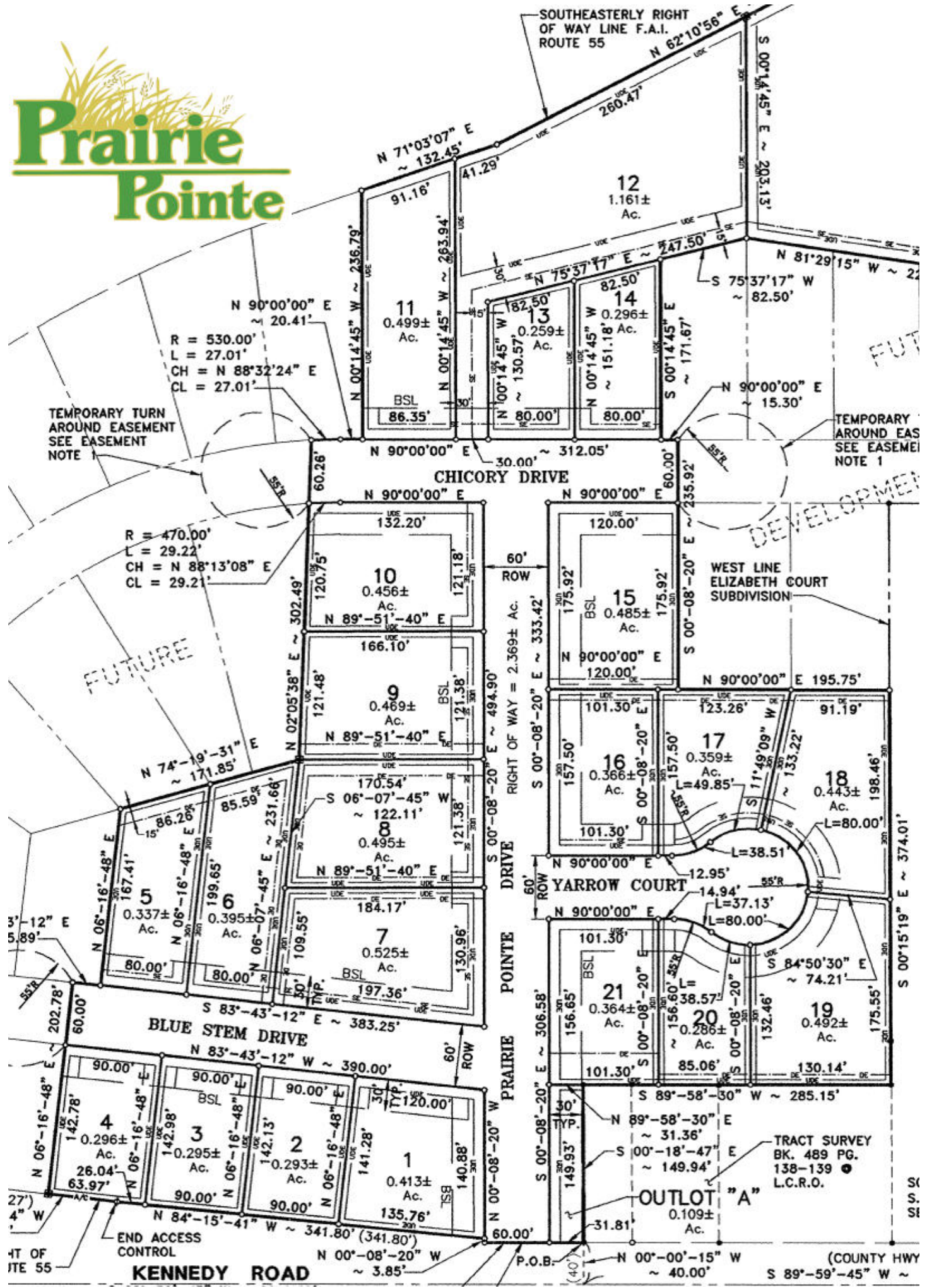


Prairie Pointe



N 90°00'00" E
 ~ 20.41'
 R = 530.00'
 L = 27.01'
 CH = N 88°32'24" E
 CL = 27.01'

R = 470.00'
 L = 29.22'
 CH = N 88°13'08" E
 CL = 29.21'

FUTURE

DEVELOPER

TEMPORARY AROUND EAS SEE EASEMENT NOTE 1

TEMPORARY TURN AROUND EASEMENT SEE EASEMENT NOTE

HT OF RTE 55

END ACCESS CONTROL

KENNEDY ROAD

P.O.B.

OUTLOT "A"

TRACT SURVEY BK. 489 PG. 138-139 L.C.R.O.

COUNTY HWY